





Cambridge Road, Thundridge, Ware, SG12 0SU

Westwood Leber are delighted to bring to the market this truly unique detached family residence, occupying an exceptional wrap-around plot in the highly sought-after village of Thundridge.

Positioned centrally within its substantial grounds and set behind an impressive frontage, this attractive home enjoys an abundance of privacy, extensive parking and beautifully proportioned gardens that surround the property on all sides. Offering over 2,300 sq ft of versatile accommodation including a substantial self-contained annexe, this is a rare opportunity for families seeking flexible living arrangements in a prime Hertfordshire location.

The main residence offers well-balanced accommodation throughout whilst a standout feature of this property is the substantial self-contained annexe, offering completely independent accommodation comprising a living room, fitted kitchen, conservatory, double bedroom and shower room. This superb addition offers endless possibilities, whether utilised for extended family, dependent relatives, guest accommodation, a home business or as a valuable income-generating opportunity.

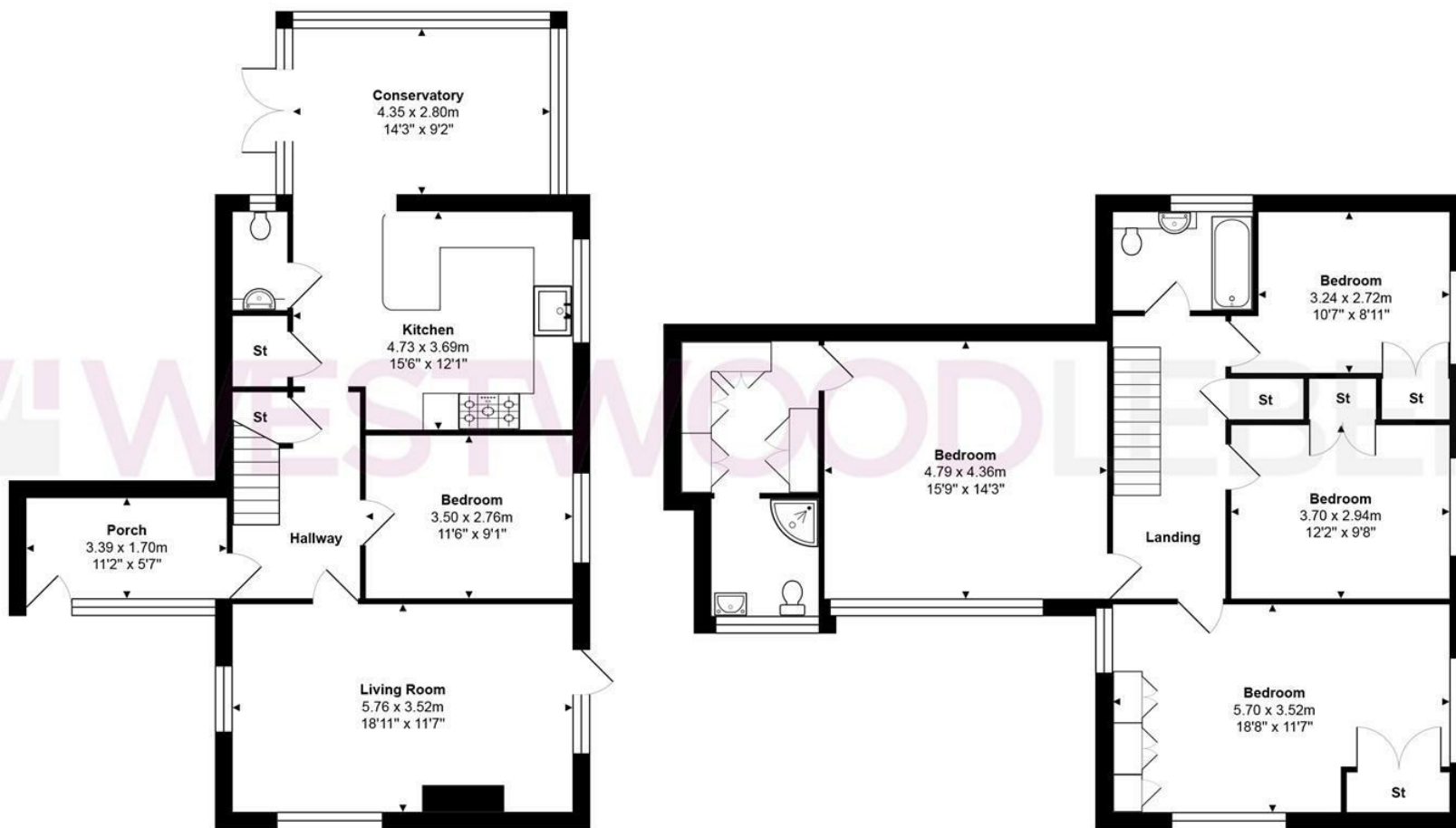
Externally, the property enjoys a commanding position within a generous wrap-around plot, with extensive multi-tiered gardens, mature boundaries and a particularly large frontage providing ample off-street parking for numerous vehicles. The plot offers an excellent degree of privacy and presents exciting potential for further enhancement, subject to any necessary consents.

The property is ideally situated within the desirable village of Thundridge, renowned for its attractive surroundings and excellent access to nearby Ware and Hertford. Families will appreciate the proximity to a selection of highly regarded schools, whilst the prestigious Hanbury Manor Hotel & Country Club is just moments away, offering championship golf, luxury spa facilities and fine dining. Excellent road and rail connections provide



WESTWOODLEBER

WESTWOODLEBER
LET US GUIDE YOU HOME



Total Area: approx. 167.4 m² ... 1802 ft²

THE FLOORPLAN IS FOR ILLUSTRATIVE PURPOSES ONLY AND IS NOT TO SCALE.
 Measurements and features are approximate and may differ from the actual property. Verify all details independently; no liability is accepted for errors or omissions.

Property marketing provided by www.fotomarketing.co.uk











W WESTWOODLEBER

W WESTWOODLEBER
LET US GUIDE YOU HOME